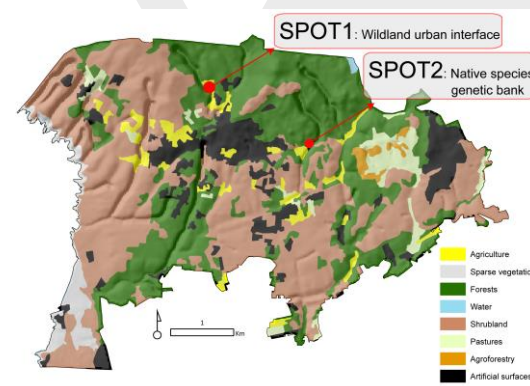


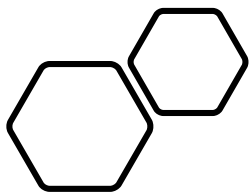
DSS serious game



PREVENTION ACTION INCREASES
LARGE FIRE RESPONSE PREPAREDNESS



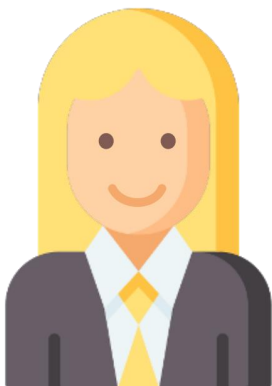
funded by the European Union Civil Protection Mechanism Programme



The players



PREVENTION ACTION INCREASES
LARGE FIRE RESPONSE PREPAREDNESS



Conceição
Municipal
Civil
Protection



Francisco
Landscape
Consultant



Catarina
Smart
Solution 1

Marta
Smart
Solution 2



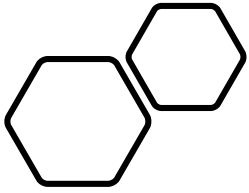
Laia
Smart
Solution 3



CTFC



funded by the European Union Civil Protection Mechanism Programme

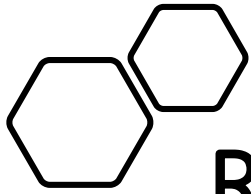


PREVENTION ACTION INCREASES
LARGE FIRE RESPONSE PREPAREDNESS

- Landscape with very high wildfire risk;
- There is a need for fuel management;
- Several options on how to intervene on the landscape;
- you will help us to choose the most suitable action.



funded by the European Union Civil Protection Mechanism Programme



Rules



PREVENTION ACTION INCREASES
LARGE FIRE RESPONSE PREPAREDNESS

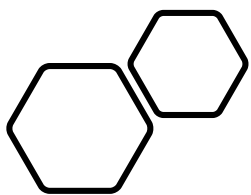
- Context of the landscape;
- Different options will be presented;
- Google forms:
FM options and smart solution criteria;
Which smart solution to apply.



CTFC



funded by the European Union Civil Protection Mechanism Programme



Rules

- Google forms:

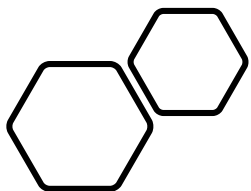
<https://forms.gle/mMhgy2nDbuaNSyUHA>

- Results discussion and solution to apply.

Smart 1: Mechanical treatment *



	low	medium	high
Sustainability	<input type="radio"/>	<input type="radio"/>	<input type="radio"/>
Cost-Efficiency in Disaster Risk Management	<input type="radio"/>	<input type="radio"/>	<input type="radio"/>
Cooperation	<input type="radio"/>	<input type="radio"/>	<input type="radio"/>
Lessons learnt approach	<input type="radio"/>	<input type="radio"/>	<input type="radio"/>



Criteria

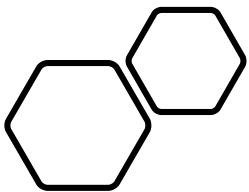


PREVENTION ACTION INCREASES
LARGE FIRE RESPONSE PREPAREDNESS

Criteria	Main characteristics
Sustainability	In social, economic and environmental terms
Cost-efficiency	Avoided cost of the prevented fires
Cooperation	Different stakeholders and policies, involving private and public ones
Lessons learnt	Integrating the achievements and also the fails during their implementation

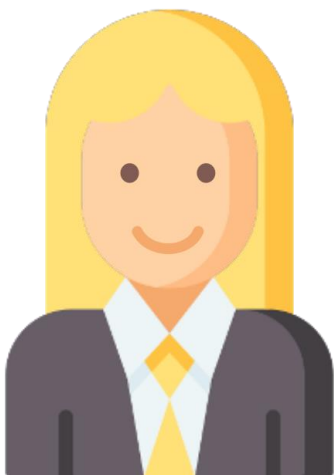


funded by the European Union Civil Protection Mechanism Programme

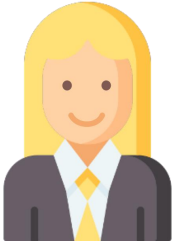


PREVENTION ACTION INCREASES
LARGE FIRE RESPONSE PREPAREDNESS

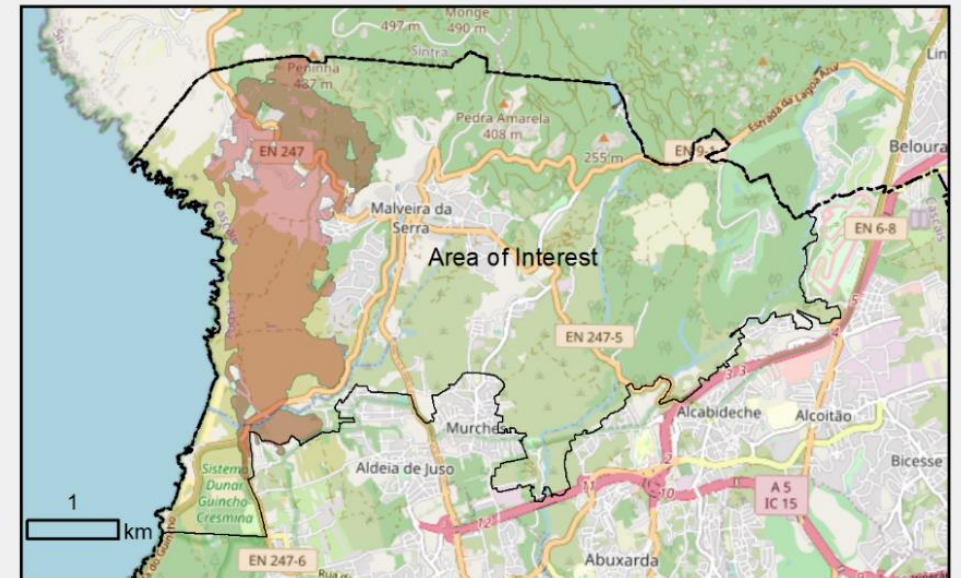
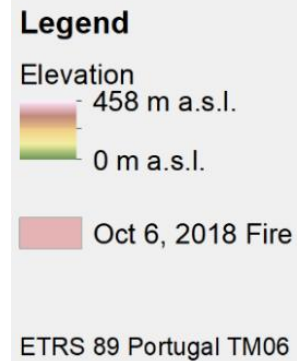
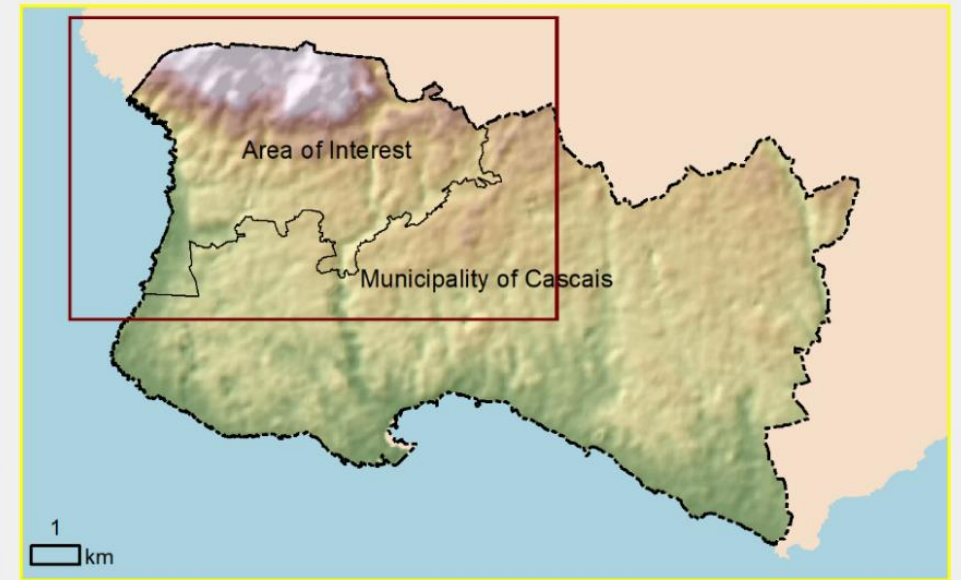
Thank you for
coming! Let me
present the area at
risk.

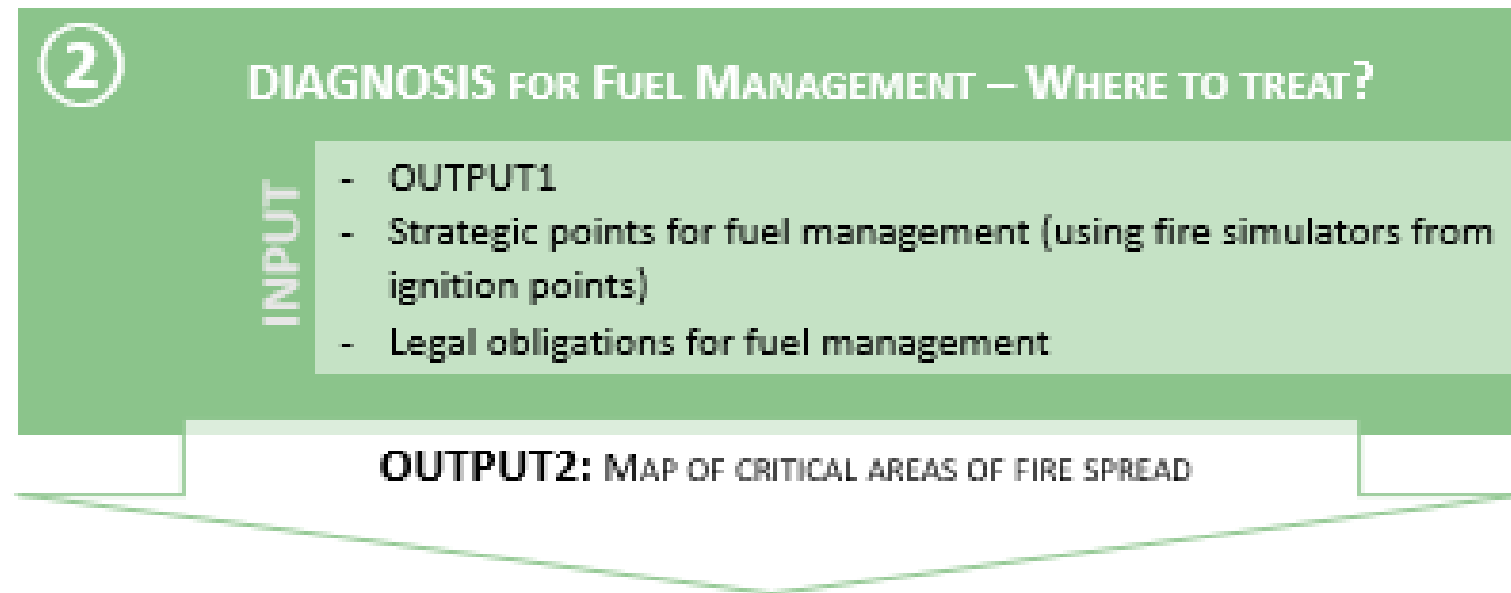
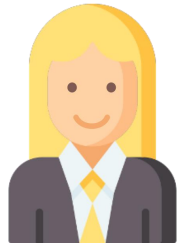


funded by the European Union Civil Protection Mechanism Programme



Area at risk



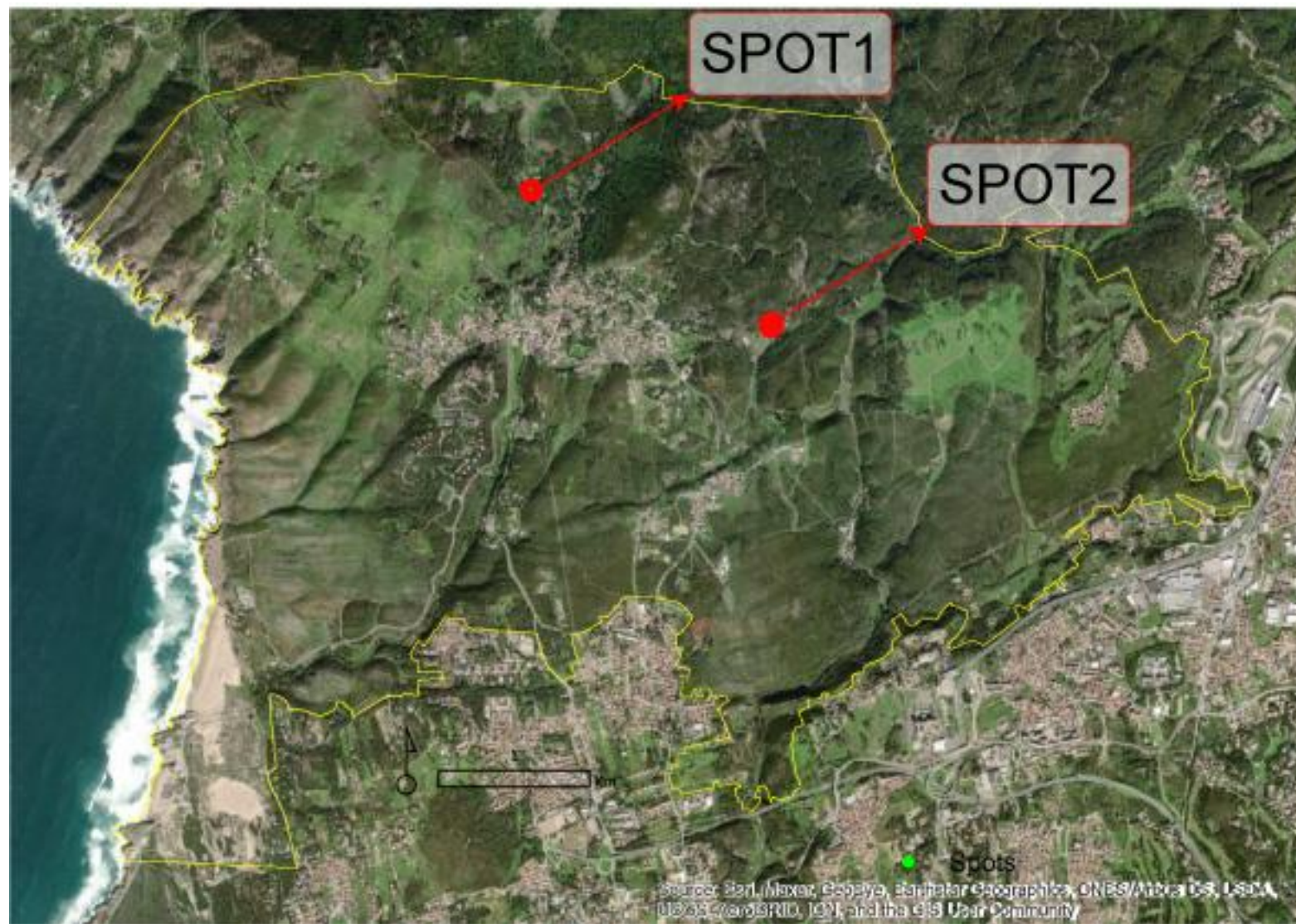


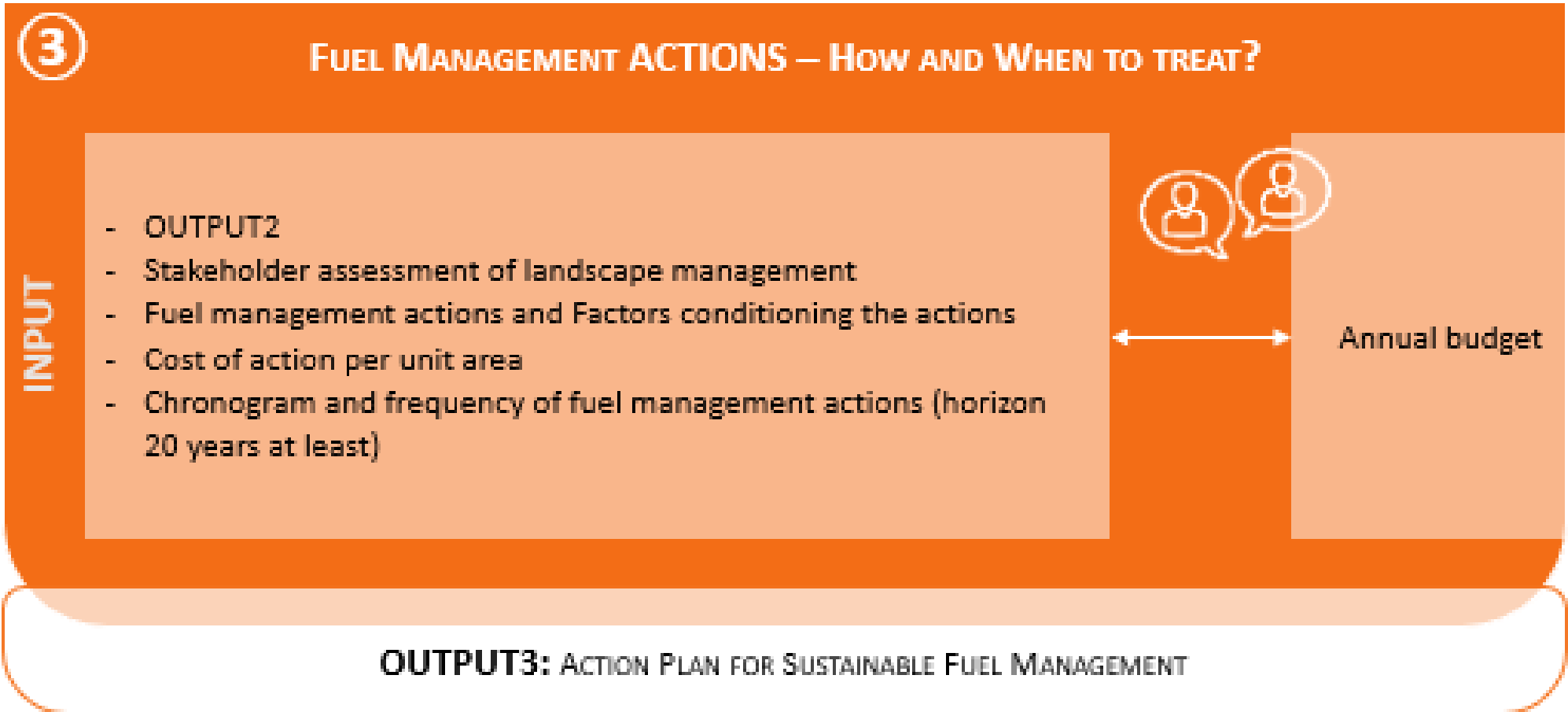
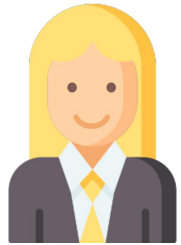
SPOT1

Wildland
Urban
Interface

SPOT2

Native Species
Genetic Bank





SPOT1

Wildland
Urban
Interface



SPOT2

Native Species
Genetic Bank



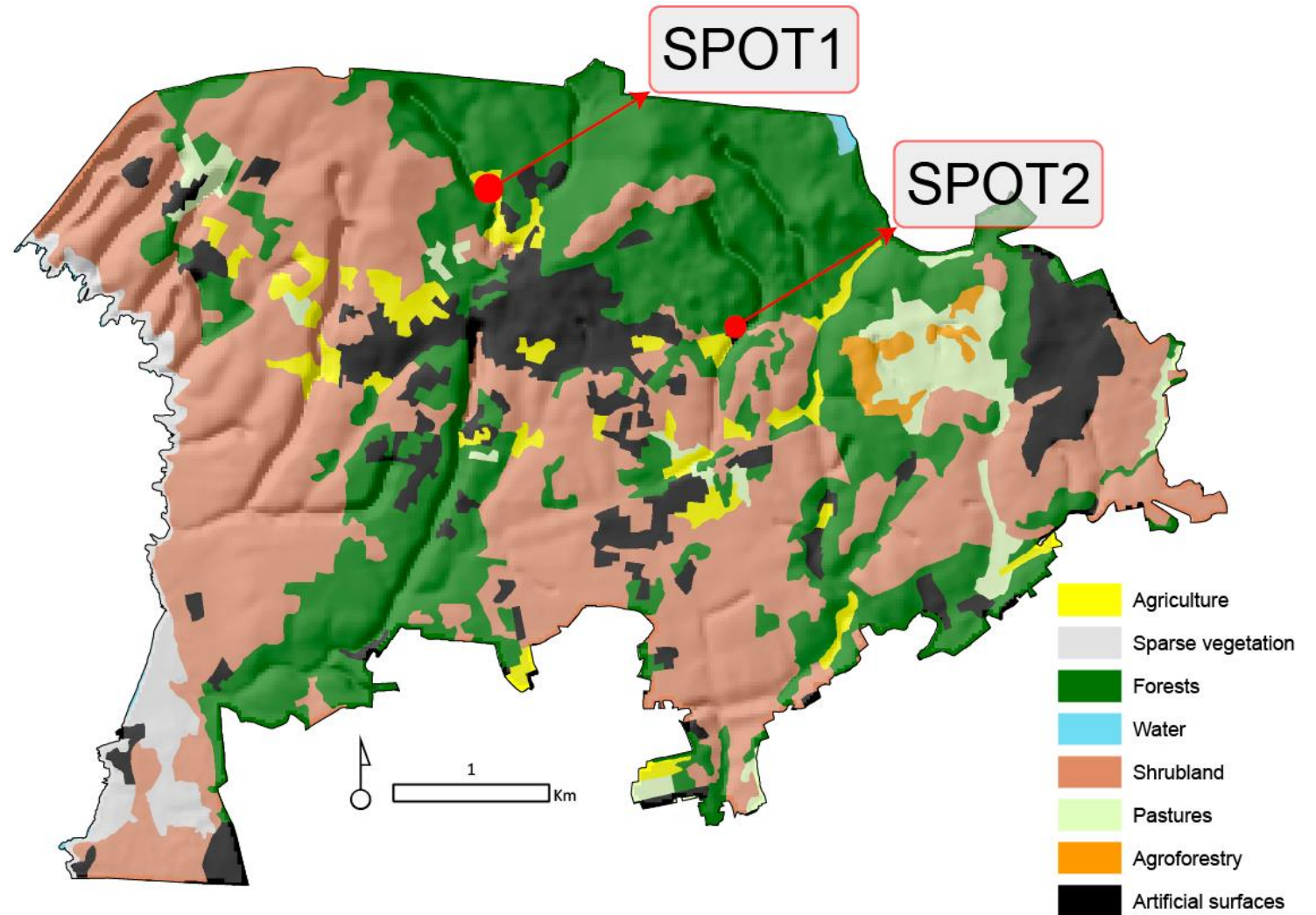
Elements at risk

SPOT1

Wildland
Urban
Interface

SPOT2

Native Species
Genetic Bank



LULC

SPOT1

Agriculture

Surroundings:

Forest
Abandoned
agriculture



LULC

SPOT2

Artificial surface

Surroundings:

Forest
Agriculture
Shrubland



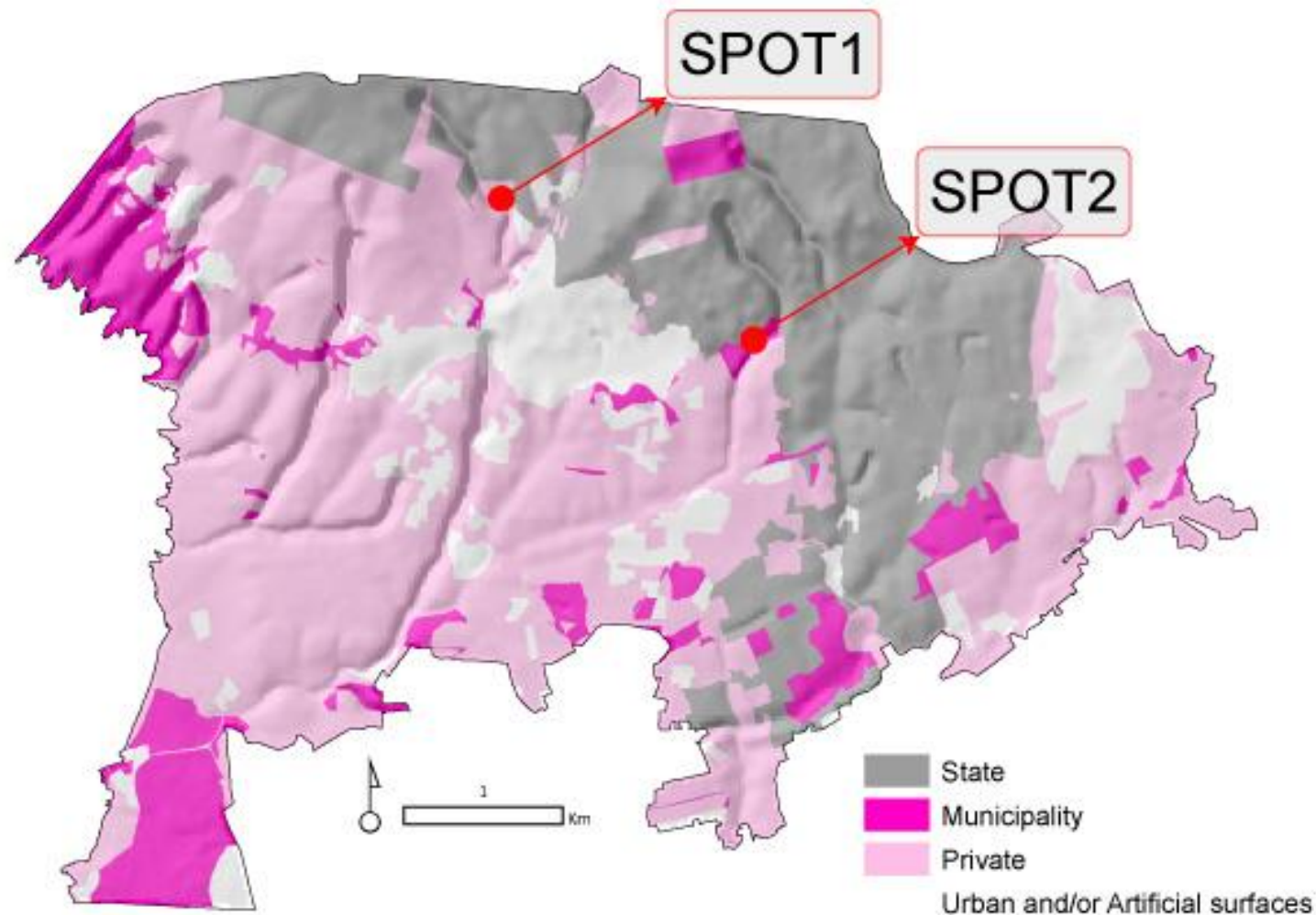
Ownership

SPOT1

Private

SPOT2

Municipality



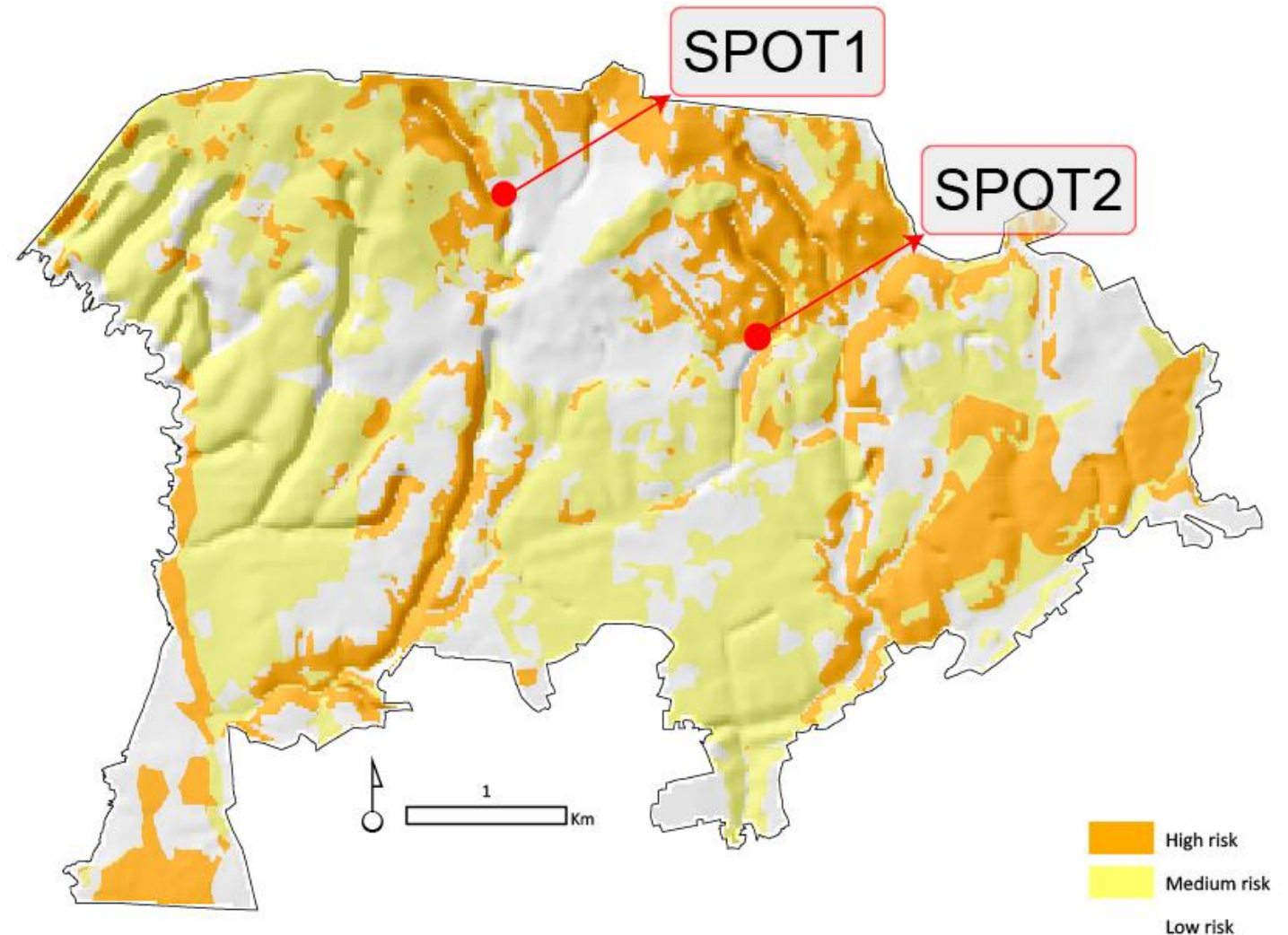
Risk Factors

SPOT1

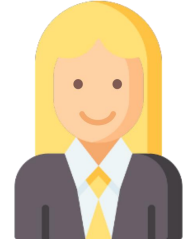
- Households
- Main wind direction is North
- Dense forest at North
- Shrubland is not managed
- Near the households abandoned agriculture

SPOT2

- Storage of native seeds
- Main wind direction is North
- Dense forest at North



Resources within the municipality



1 flock of 200
sheep/goats
(private owned)



Municipal sapper
brigades / rural
workers



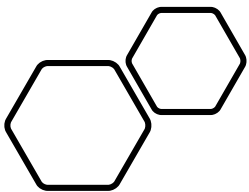
Environmental
department within
the Municipality



1 prescribed
burning technician

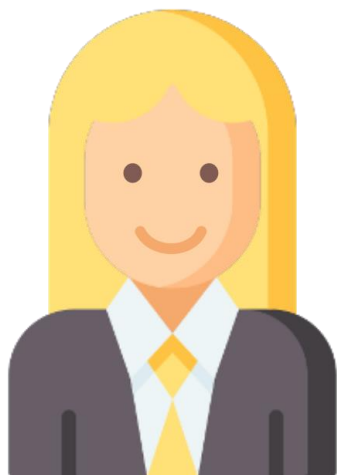


Vegetation
management small
enterprise



PREVENTION ACTION INCREASES
LARGE FIRE RESPONSE PREPAREDNESS

Catarina, Marta and
Laia, can you
present your
proposals?



funded by the European Union Civil Protection Mechanism Programme

Mechanical treatment – Smart Solution 1

- Private company
- Cuttings and clearings of wood and brush
- Reducing fuel will decrease fire hazard and protect communities
- Periodic interventions
- Cooperation with other activities (prescribed burning, grazing, conservation)
- Actors: local municipalities, forest owners (private or associations)



Local biomass production – Smart Solution 2

- Sub-regional Service of Biomass
- Biomass buying-selling market
- Forest management from wildfire prevention perspective
- Proximity energy
- Different actors involved



Silvopastoral Management – Smart Solution 3

Prescribed burn

- Prescribed burning is carried out to **create open spaces**.
- **Training** for wildfire managers.

Grazing

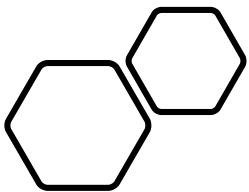
- Extensive livestock grazing to **maintain open spaces**.
- Shepherds introduce their flocks into forest areas with the aim of **controlling the undergrowth**.

Butcher's shops and restaurants

- To add value to the products: **label certifying supports** fire risk management by the flocks.
- **Engage** population, **responsible consumption**, risk awareness.

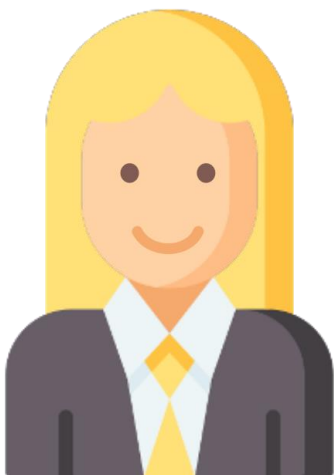


Actors: fire management bodies, extensive livestock farms, butchers' shops and restaurants, consumers.

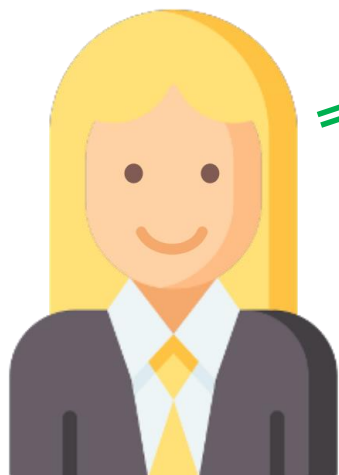
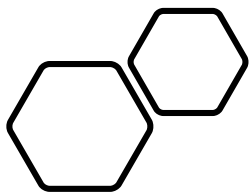


PREVENTION ACTION INCREASES
LARGE FIRE RESPONSE PREPAREDNESS

Catarina, Marta and
Laia, thank you!!



funded by the European Union Civil Protection Mechanism Programme



Now it is your turn!

Please vote for the
best smart solution!



PREVENTION ACTION INCREASES
LARGE FIRE RESPONSE PREPAREDNESS

<https://forms.gle/mMhgy2nDbuaNSyUHA>



funded by the European Union Civil Protection Mechanism Programme